

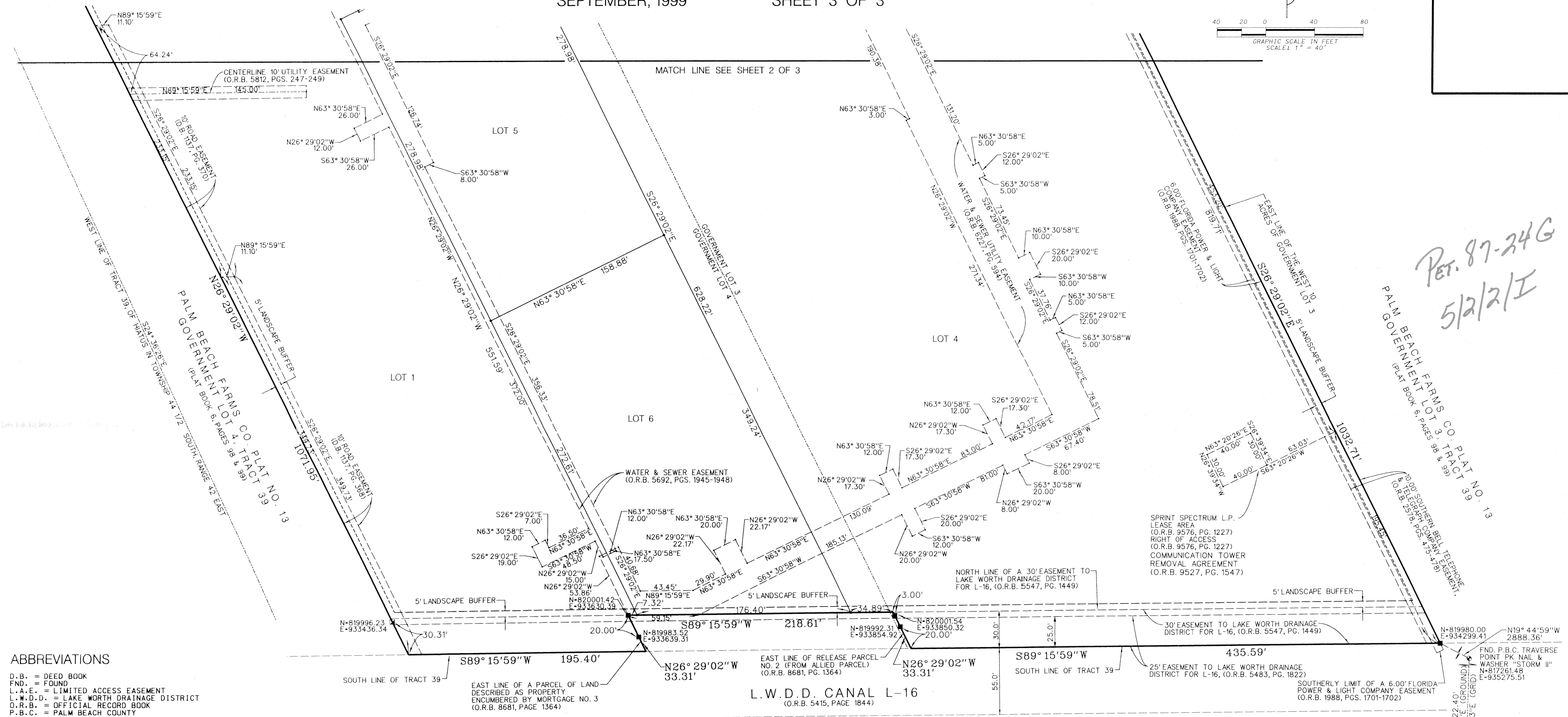
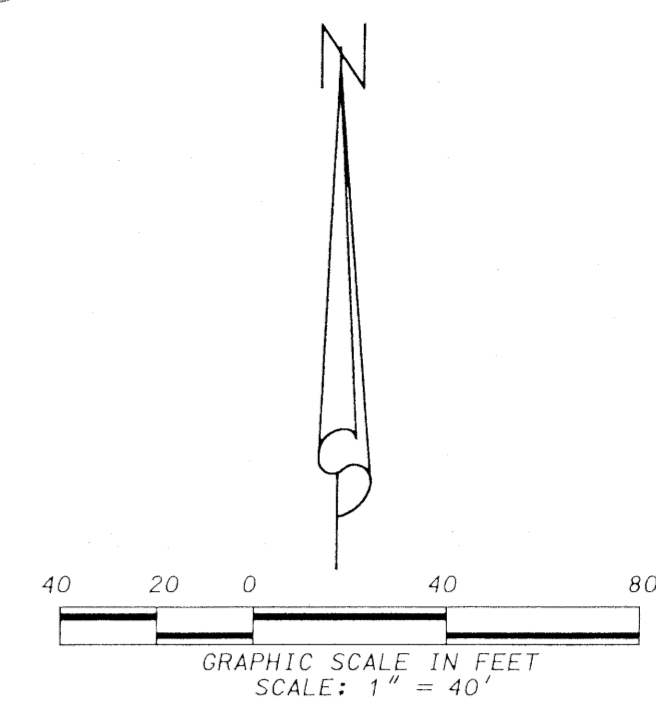
LANTANA ROAD P.C.D.

BEING A REPLAT OF A PORTION OF GOVERNMENT LOTS 3 AND 4, TRACT 39 OF THE HIATUS IN TOWNSHIP 44 1/2 SOUTH, RANGE 42 EAST, PALM BEACH COUNTY, FLORIDA, ACCORDING TO THE PALM BEACH FARMS CO. PLAT NO. 13, PLAT BOOK 6, PAGES 98 AND 99, PUBLIC RECORDS OF PALM BEACH COUNTY, FLORIDA.

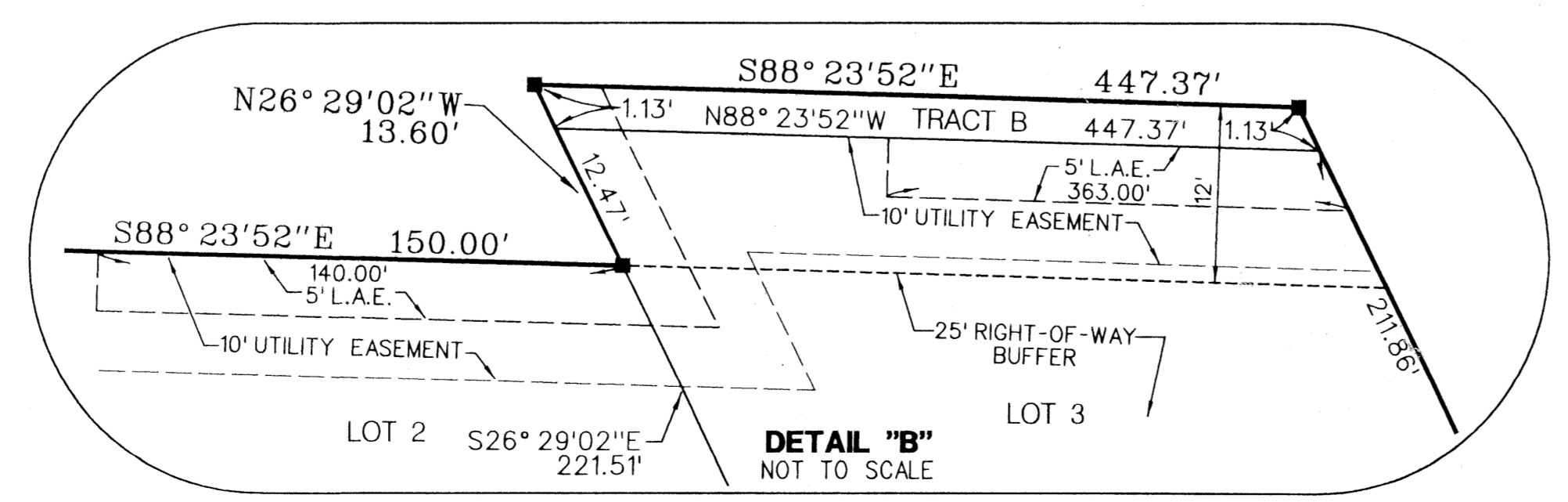
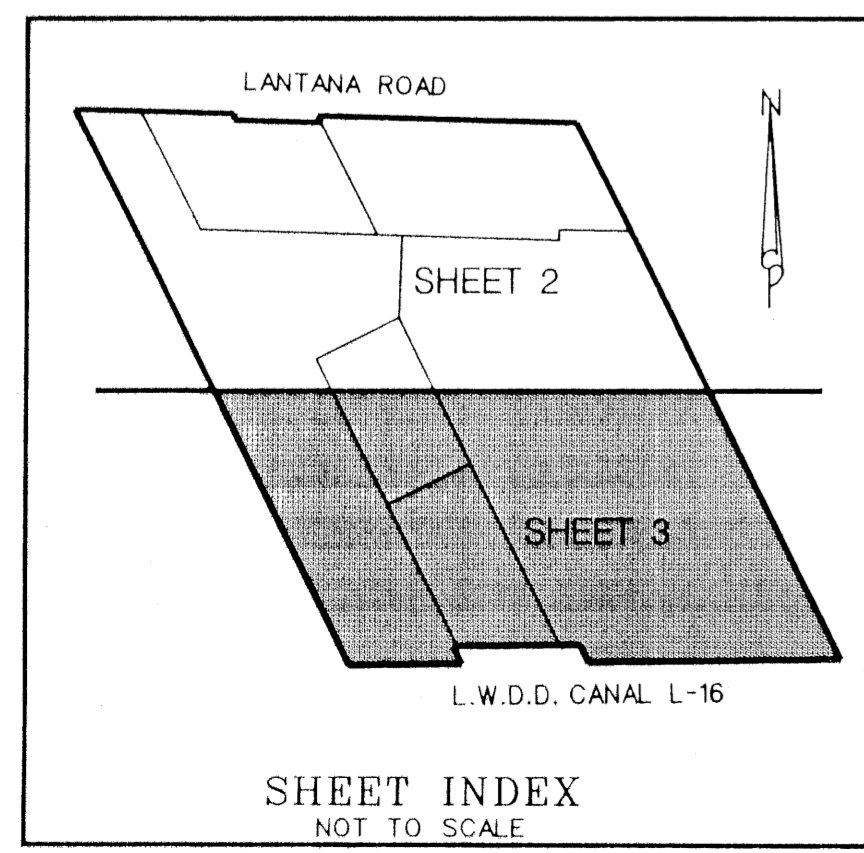
SEPTEMBER, 1999 SHEET 3 OF 3

0590-002
5000 - 1810

24



ABBREVIATIONS
 D.B. = DEED BOOK
 FND. = FOUND
 L.A.E. = LIMITED ACCESS EASEMENT
 L.W.D.D. = LAKE WORTH DRAINAGE DISTRICT
 O.R.B. = OFFICIAL RECORD BOOK
 P.B.C. = PALM BEACH COUNTY
 PG. = PAGE
 U.E. = UTILITY EASEMENT



LIDBERG LAND SURVEYING, INC.
 LB4431 675 West Indiantown Road, Suite 200,
 Jupiter, Florida 33458 TEL. 561-746-8454

| | | | |
|--|---------|------|------------------|
| CAD: K:\USTATION \ PLATS \ 06-98 \ 97-089 \ SHEET3.DGN | | | |
| REF: K:\USTATION \ PLATS \ 06-98 \ 97-089 \ 97-089.DGN | | | |
| FLD. | FB. | PG. | JOB 97-089(306A) |
| OFF. R.W. / L.C. | | | DATE 04/12/99 |
| CKD. D.C.L. | SHEET 3 | OF 3 | DWG. 097-089P |

0590-002

SUBDIVISION Lantana Road Pcd
 BOOK 07
 FLOOD ZONE
 QUAD # 33
 SE 438
 TAZ
 FUD NAME Lantana Road

87/24